

PLAN HOLD CORPORATION • IRVINE, CALIFORNIA
RENDERED BY NUMBER 07548

STRAWBERRY LAKES PLAT ONE

A PORTION OF LANTANA LAKES P.U.D.

SITUATE IN TRACTS 38 AND 39, TOWNSHIP 44 1/2 SOUTH, RANGE 42 EAST,
PALM BEACH COUNTY, FLORIDA

SHEET 2 OF 2.

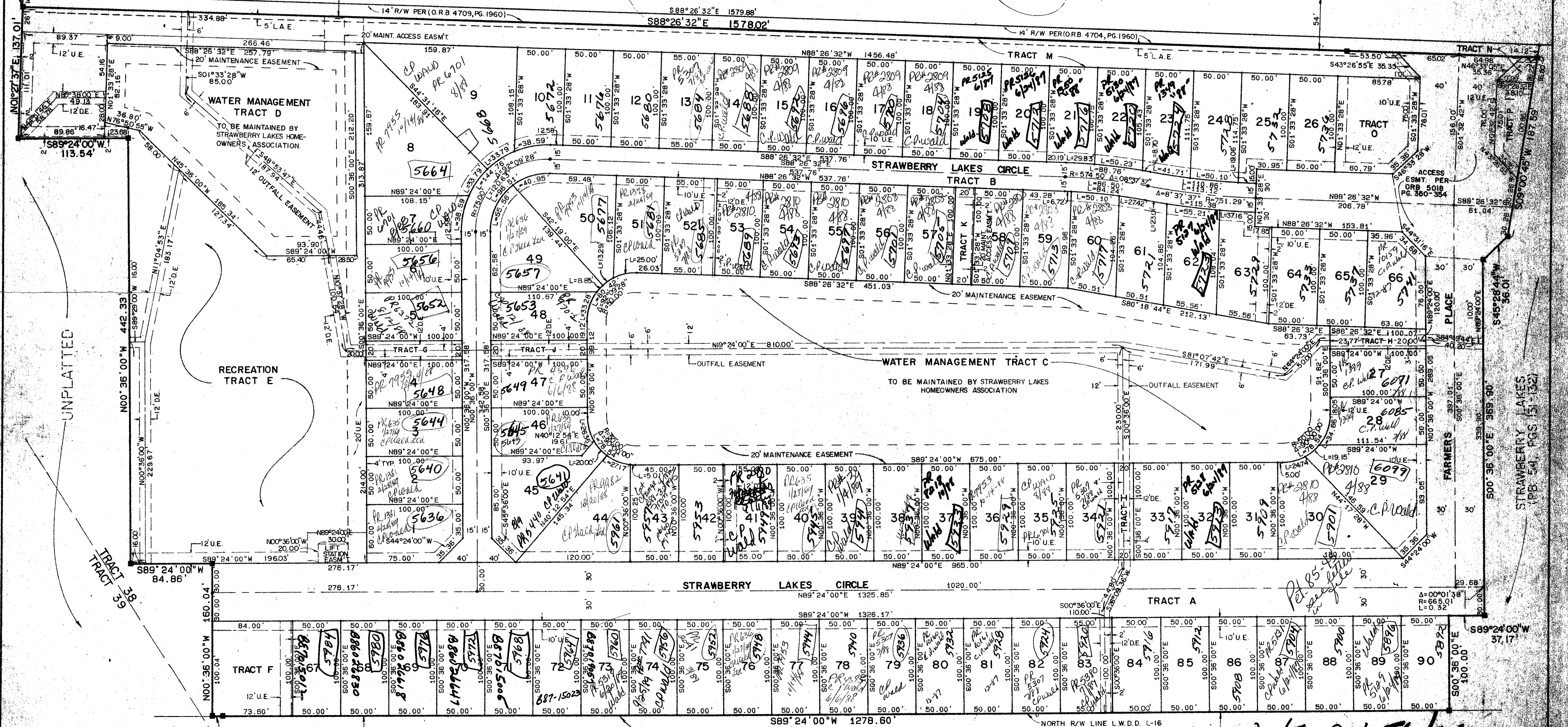
142

STATE OF FLORIDA
COUNTY OF PALM BEACH
THIS PLAT WAS FILED FOR
RECORD AT _____ DAY OF _____
AD, 1985 AND DULY RECORDED
IN PLAT BOOK _____ ON PAGES
AND _____
JOHN B. DUNKLE, CLERK
BY: _____, D.C.

SUBDIVISION *Strawberry Lakes*
BOOK 56 PAGE 142
FLOOD ZONE B FLOOD MAP # 175B
QUAD # 25
SE
PUD NAME *Lantana Lakes P.U.D.*
TAZ 437

SCALE IN FEET
1" = 50'

LANTANA ROAD (SR.812) (80' R/W)
(D.B. 972, PG.262)-(D.B. 974, PG.488)
SOUTH LINE SECTION 35, T44S., R42E.



NORTH LINE SEC. 3-45-42
S89°11'43"W
10.40'

L.W.D.D. LATERAL -16 (O.R.B. 2252, PG.732)

MADE BY [Signature]

0470-001 56/142
Meridian Surveying and Mapping Inc.
WEST PALM BEACH, FLORIDA
2000 LOWBARD STREET
DRAWN / MEH DATE OCT. 1985
CHECKED SCALE 1" = 50'
DRAWING NO 85-PL-016

STRAWBERRY LAKES PLAT ONE